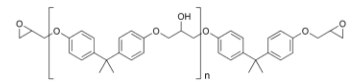




**Compset 221**  
**adhesive**



## Description

**CompSet 221 Epoxy Adhesive** is two-part epoxy glue designed for bonding of FRP parts and timberwork. The system has two hardeners, standard and fast and is a 2:1 mix ratio by volume. The glue has a light creamy colour appearance when mixed and provides excellent glue lines on light coloured joinery.

The consistency is of a medium viscosity so as the glue will not slump when trowled on verticals, but also has ability to gap fill or bond surfaces with regularities.

The system when cured provides a rigid joint with good elongation.

The two hardeners provide working times to suit small and large surfaces as well as varying temperature zones.

## Appearance

### CompSet 221 Epoxy Resin

Viscosity at 20 °c	Paste
Density at 20 °c	1.1 – 1.21 g/cm <sup>3</sup>
Flash Point	> 120 °c

### CompSet 221 Hardener's

Viscosity at 20 °c	Paste
Density at 20 °c	0.96 – 1.01 g/cm <sup>3</sup>
Flash Point	> 120 °c

## Application data

### Mixing

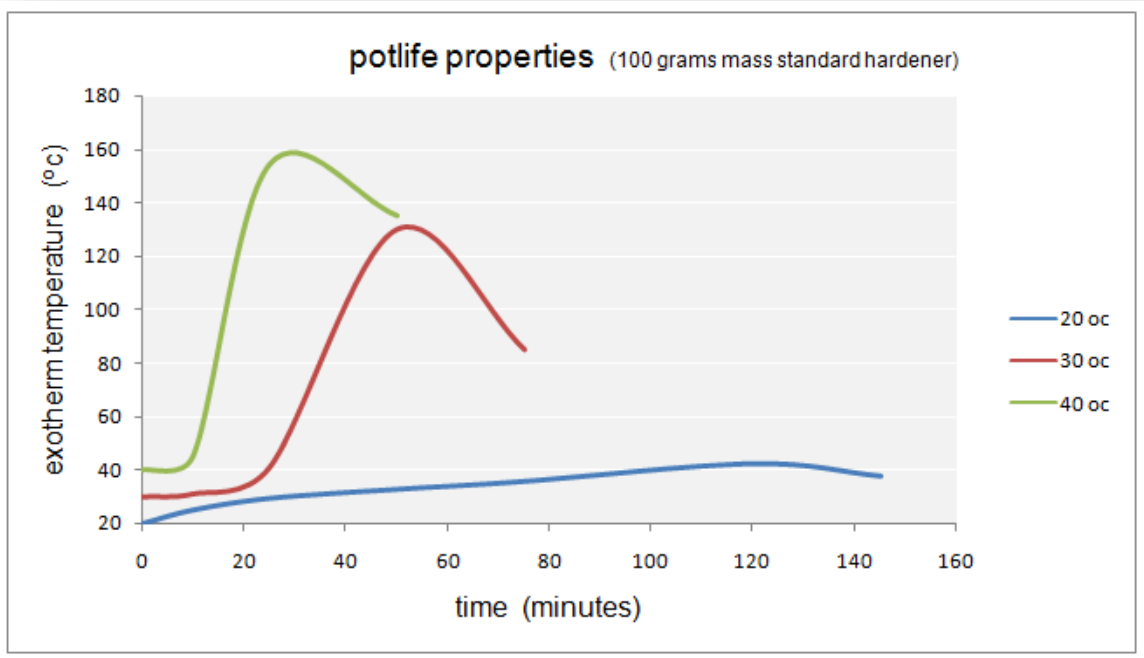
Mixing Ratio by volume      2 Parts **CompSet 221 Resin** to      1 Parts **CompSet 221 Hardener**

### Pot Life and Exotherm

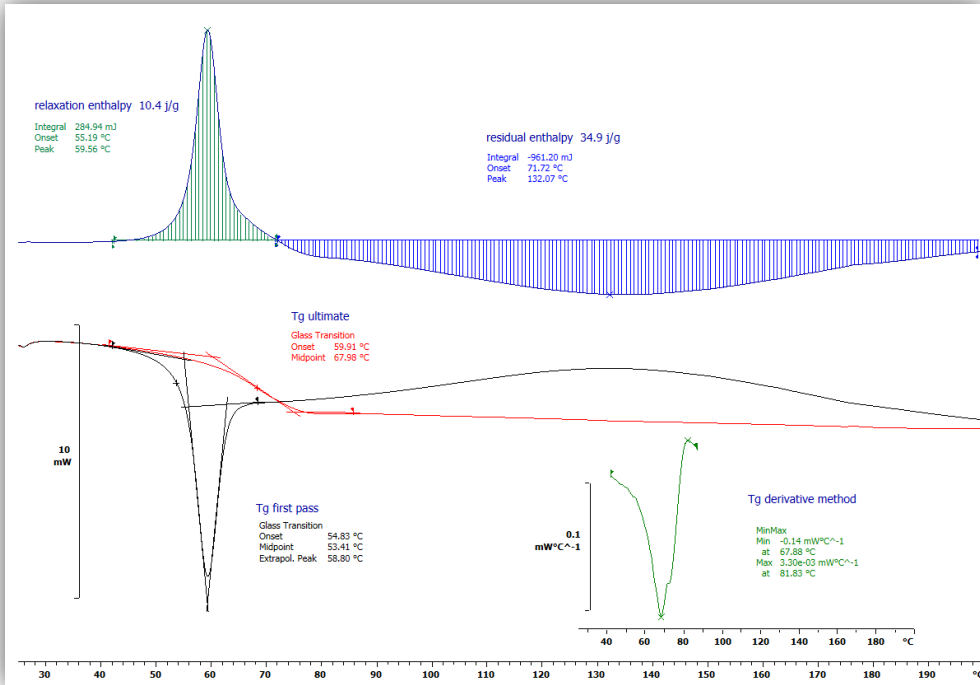
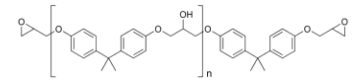
Pot Life 100 grams at 20 °c

25 - 35 mins standard hardener

15 – 25 mins fast hardener



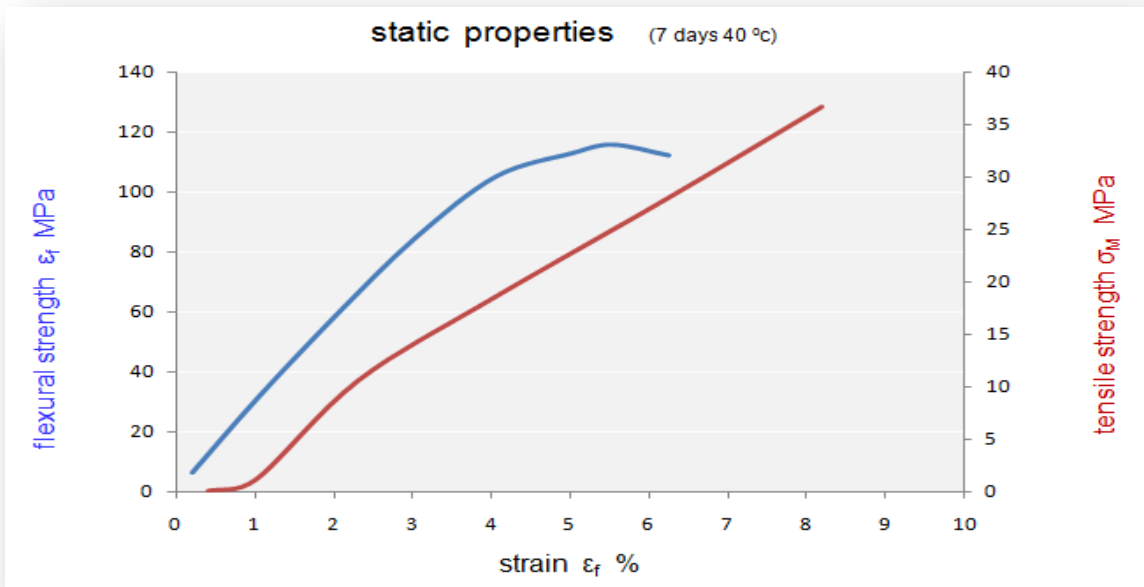
Application data Differential Scanning Calorimeter DSC



7 days 40 °C

Tg first pass	Tg ultimate	$\Delta R$ Jg <sup>-1</sup>	$\Delta H$ Jg <sup>-1</sup>
63 °C	67 °C	-10.5	14.3

Application data static mechanical properties

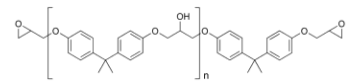


7 days 40 °C

Flex $\sigma_{fM}$ max	Flex $\epsilon_{fM}$ max strain	Flex $\sigma_{fC}$	Flex $\sigma_{fB}$ ultimate	Flex $\epsilon_{fB}$ ultimate strain
116 MPa	5.7%	96 MPa	112 MPa	6.4%

Ten $\sigma_M$	Ten $\epsilon\%$
37 MPa	8.2%

PRODUCT NAME : CompSet 221 Adhesive Series



## REFERENCED TEST METHODS

Viscosity	ISO 2555
Epoxy Equivalent weight	ISO 3001
Determination of amine nitrogen content	ISO 9702
Reactivity dynamic	ISO 11357-5
Tg	ISO 111357-3
Tg Enthalpy	ISO 111357-5
Flexural Properties	ISO 178
Tensile Properties	ISO 527
Heat Deflection Temperature	ISO 75
Compressive Properties	ASTM D695
Dynamic Mechanical Properties	ASTM D5418
DMA flexural vibration	ISO 6721
DMA shear	ISO 6721

### **Notice:**

The information provided in this data sheet is intended to help the user achieve positive results. Results shown are typical properties obtained by laboratory testing to the listed standards. It should not be construed as specifications. It is the user's responsibility to fully test and qualify the resin system, along with ingredients, methods, applications or equipment identified herein, by the user's knowledgeable formulator or scientist, and to determine the appropriate use conditions and legal restrictions, prior to use of any information given in this information sheet.

The information provided herein is presented in good faith and is based on the best of Vee-Tek knowledge, information, and belief. Since use conditions at outside facilities are beyond Vee-Tek control and government requirements may differ from one location to another and may change with time, it is solely the Buyer's responsibility to determine whether Vee-Tek products are appropriate for the Buyer's use, and to assure the Buyer's workplace, use, and disposal practices are in compliance with applicable government requirements. Consequently, Vee-Tek assumes no obligation or liability for use of these materials and makes no warranty, express or implied. The user of the information provided is solely responsible for compliance with any applicable government requirements. NO WARRANTIES ARE GIVEN; ALL IMPLIED WARRANTIES OF MERCHANTABILITY OR FITNESS FOR A PARTICULAR PURPOSE ARE EXPRESSLY EXCLUDED.